

Dell™ DW514 External DVD±RW Slot Drive

# Owner's Manual



Information in this document is subject to change without notice.

© 2013 Dell Inc. All rights reserved.

Reproduction of these materials in any manner whatsoever without the written permission of Dell Inc. is strictly forbidden. Trademarks used in this text: Dell™ and the DELL logo are trademarks of Dell Inc.; Microsoft® and the Windows start button logo are either trademarks or registered trademarks of Microsoft Corporation in the United States and/or other countries. Other trademarks and trade names may be used in this document to refer to either the entities claiming the marks and names or their products. Dell Inc. disclaims any proprietary interest in trademarks and trade names other than its own.

2013-05 Rev. A00

## Restrictions and Disclaimers

The information contained in this document, including all instructions, cautions, and regulatory approvals and certifications, is provided by the supplier and has not been independently verified or tested by Dell. Dell cannot be responsible for damage caused as a result of either following or failing to follow these instructions.

All statements or claims regarding the properties, capabilities, speeds or qualifications of the part referenced in this document are made by the supplier and not by Dell. Dell specifically disclaims knowledge of the accuracy, completeness or substantiation for any such statements. All questions or comments relating to such statements or claims should be directed to the supplier.

## Export Regulations

Customer acknowledges that these Products, which may include technology and software, are subject to the customs and export control laws and regulations of the United States ("U.S.") and may also be subject to the customs and export laws and regulations of the country in which the Products are manufactured and/or received. Customer agrees to abide by those laws and regulations. Further, under U.S. law, the Products may not be sold, leased or otherwise transferred to restricted end-users or to restricted countries. In addition, the Products may not be sold, leased or otherwise transferred to, or utilized by an end-user engaged in activities related to weapons of mass destruction, including without limitation, activities related to the design, development, production or use of nuclear weapons, materials, or facilities, missiles or the support of missile projects, and chemical or biological weapons.

# Contents

## Introduction

- Manufacturer Model Name and Number
- Drive Description
- Special Features of the Drive
- System Requirements
- Contents of the Box

## Product Features and Setup

- Product Features
- Setting Up your Dell DW514 External DVD±RW Slot Drive
- Cleaning a Disc
- Cleaning the Drive

## Troubleshooting

- Symptoms and Solutions

## Specifications

- Manufacturer and Model Name
- Supported Functions
- Extended Specifications

## Regulatory

## Introduction

---

### Manufacturer Model Name and Number

Dell DW514 External DVD±RW Slot Drive

### Drive Description

The Dell DW514 external DVD±RW slot drive reads and writes to CD and DVD media. This drive has an ultra slim form factor. For information on the media types supported, see [Specifications](#) section.

### Special Features of the Drive

The Dell DW514 External DVD±RW Slot Drive has the following features:

- USB 2.0 interface (480 Mbits/s)
- Type: External, slot load
- Supports 12 cm discs only
- Supports Buffer Under Run Free Recording

### System Requirements

- One USB port
- Microsoft Windows 7 or Windows 8

[Back to Contents Page](#)

## Contents of the Box

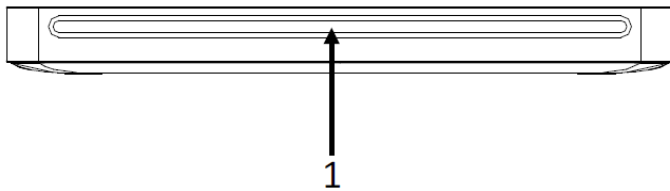


## Product Features and Setup

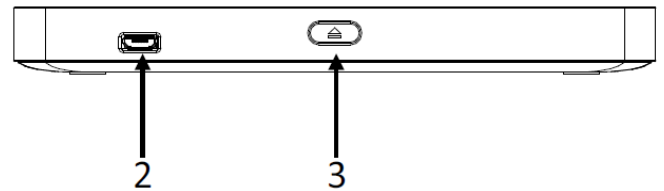
---

### Product Features

Front View



Rear View



1. Optical disc slot
2. USB 2.0 port (micro B)
3. Optical disc eject button

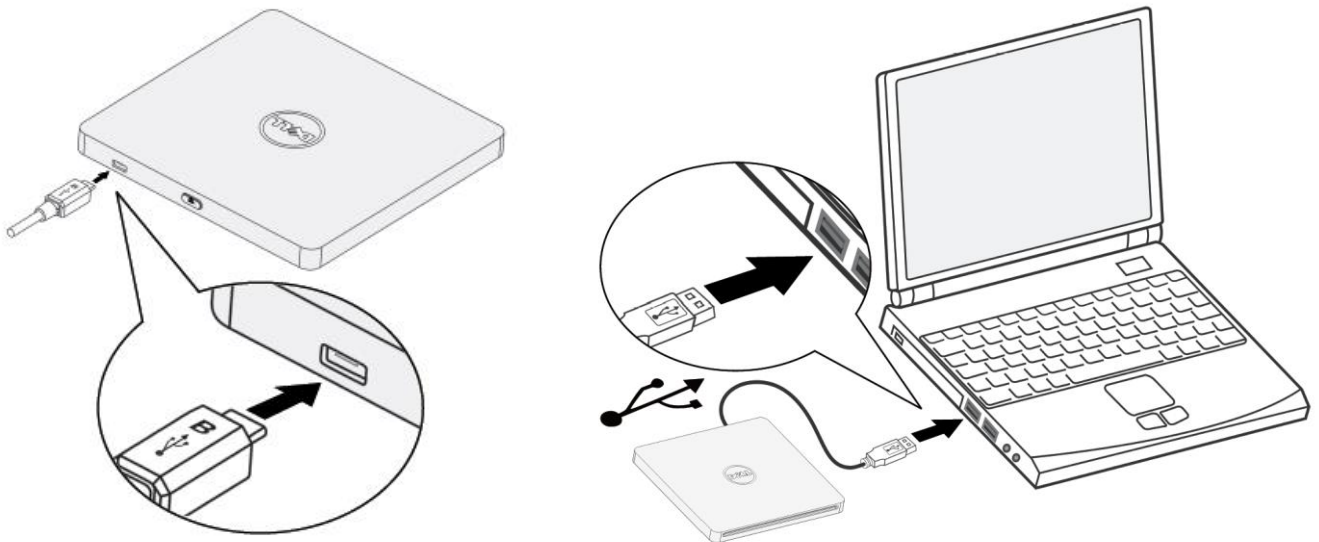
### Setting Up your Dell DW514 External DVD±RW Slot Drive

- ⚠ WARNING:** Connecting the drive to incorrect port can cause the drive to malfunction.
- ⚠ CAUTION:** Support 12 cm discs only.
- ⚠ CAUTION:** Do not place objects into the Optical disc slot.
- ⚠ CAUTION:** Never use a damaged, broken, scratched, or deformed disc.
- ⚠ CAUTION:** Do not place heavy object on the product during use.
- ⚠ CAUTION:** High-speed drives spin the disc at a high rotational speed. If a disc has printing on only half of the disc, or if there is a slight imbalance in the disc, the imbalance is greatly magnified by the high speed, causing the drive to vibrate or produce a fan-like noise. These effects are inherent in the high-speed technology and do not indicate a problem with the drive.

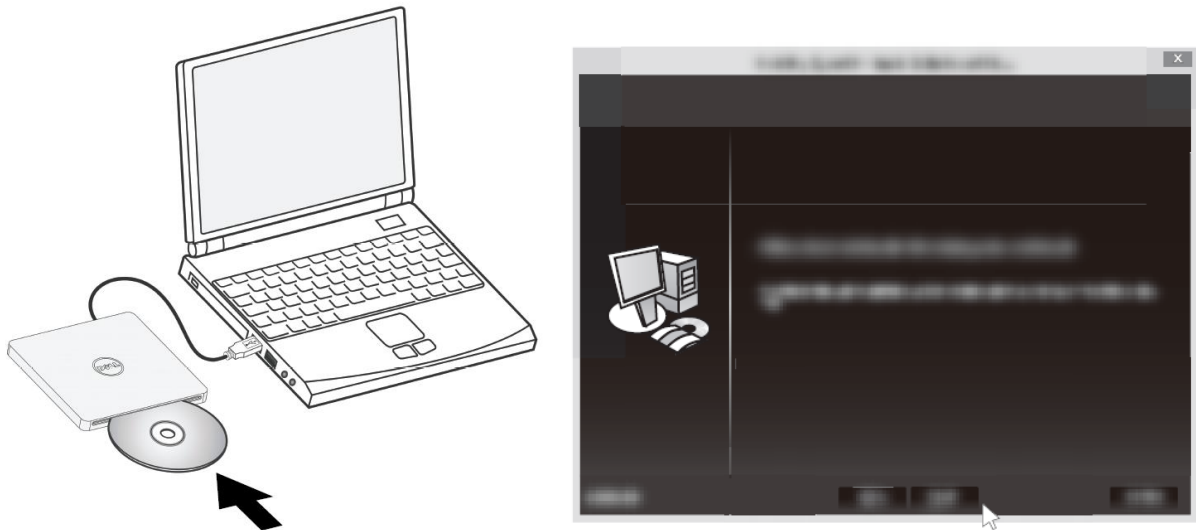
## Prerequisites

Make sure you have a computer with one or two available USB ports before connecting the drive to your computer.

## Procedure




1. Turn on your computer.
2. Connect the USB cable to a USB port on your computer.
  - ☑ NOTE: This drive does not have power button.
3. The drive turns on when connected to your computer.
  - ☑ NOTE: With the label facing up, slide the disc into the optical disc slot gently. Do not push the disc into the drive.
4. When the computer is ready, confirm that the drive is detected. And then, insert the software installation disc into the optical drive and follow the instructions on the screen.



## Removal Instructions

Depending on the operating system installed, the removal instruction may differ.

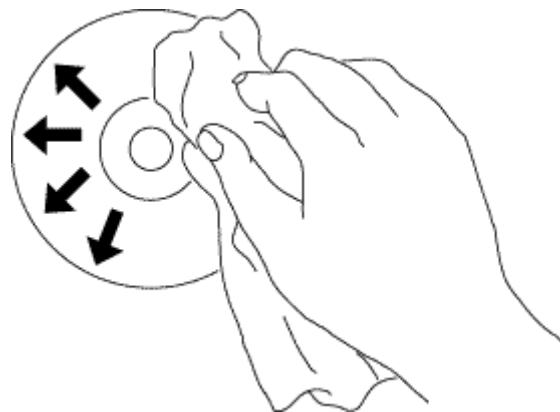
For Windows 7 users

1. Press the eject button and remove the disc.
2. Click "  " on the lower-right corner of the screen.
3. Click the option on the screen to remove the optical drive safely.
4. Disconnect the USB cable from the computer.



## Cleaning a disc

If dust or fingerprints is accumulated, wipe it with a soft cloth from the center to the edge.



△ CAUTION: Do not use benzene, paint thinner, record cleaner, solvent, or static repellent. This can damage the disc.

## Cleaning the Drive

△ CAUTION: Only a certified service technician is authorized to access any of the components inside the optical drive. Do not clean the drive from inside.

---

# Troubleshooting


---

## Symptoms and Solutions

Symptoms	Solutions
1. Drive is not recognized by system.	<ul style="list-style-type: none"><li>• Drive cable may be connected improperly. Verify the interface cable is connected properly. Disconnect and reconnect the drive.</li><li>• Portable USB drive may not be configured properly. The drive gets its power from the USB interface. The use of non-powered hubs and/or daisy-chaining USB peripherals can keep the drive from getting enough power to function. Try plugging the drive directly into the USB port on the computer.</li></ul>
2. Cannot read or play disc.	<ul style="list-style-type: none"><li>• If the disc is dirty (fingerprints, etc.), clean it with a non-abrasive cloth from the disc center hole to the outside.</li><li>• If the disc is scratched and warped, do not insert it into the drive.</li><li>• If the disc is inserted upside-down, re-insert it in the proper direction.</li><li>• If the drive is not recognized, refer to section 1 above.</li><li>• Check to see that the necessary software applications are installed correctly.</li></ul>
3. Certain types of disc do not play.	<ul style="list-style-type: none"><li>• This drive only supports discs with the formats indicated in the <a href="#">Specifications</a> section. It cannot read the data on discs with other formats. Check the disc's format.</li></ul>
4. When playing an audio CD, drive shows disc activity but there is no sound.	<ul style="list-style-type: none"><li>• The CD player application may need to be set to "Digital." In Windows Media Player, for example, from the menu bar, click on "Tools," then "Options," and then click on the "Device" tab. Select the drive and click on the "Properties" button. Set the playback mode to "Digital."</li></ul>

5. Drive will not write or read at maximum speed.	<ul style="list-style-type: none"><li>• Ensure disc is clean and free of scratches.</li><li>• Media from different manufacturers or purchased at different times will record at different speeds. The drive will adjust the available recording speeds to achieve the highest write quality.</li></ul>
6. Cannot eject disc.	<ul style="list-style-type: none"><li>• Check to see that the system is powered up.</li><li>• If the system is capable of booting into an operating system, attempt to issue an eject command (software eject, up to 10 times) from within the operating system.</li></ul>
7. Cannot write to disc (for drives with write capability).	<ul style="list-style-type: none"><li>• Is the disc loaded in the drive with the read/write surface facing the right direction? The label should be up. If a disc does not have a label, the disc code on the inner side of the disc should be properly oriented for reading when looking from the top of the disc.</li><li>• CD-R, DVD+R, DVD-R, and BD-R discs cannot be re-written.</li><li>• Please check the type of disc that is being used. Please refer to <a href="#">Specifications</a> section to ensure that the disc type is supported by this drive.</li><li>• Is there enough free space on the writable disc?</li><li>• Did a screen saver or other application operates while writing to the disc? If so, try again with the application turned off.</li></ul>
8. Cannot insert disc (for slot-load drives).	<ul style="list-style-type: none"><li>• Check to see that the system is powered up.</li><li>• Check whether there is already a disc in the drive. If so, push eject button to eject the disc (or run software "Eject" 10 times if a disc is stuck inside the drive), then load the intended disc.</li><li>• Note that this drive only supports 12cm discs.</li></ul>

## Specifications

 **NOTE:** These specifications are provided by the manufacturer for information purposes only and do not constitute an extension of Dell's warranty to you. Dell's warranty is contained in the documentation that came with your system.

---

### Manufacturer and Model Name

Manufacturer	Dell Inc.
Model Name	DW514
Type	External
Interface	USB 2.0 Micro B
Rating	5V, 1.6A

### Supported Functions

Use 'OK' for support, 'NO' for non-support, 'N/A' for not applicable media types

Media Type	Write <sup>1</sup>	Read
CD-ROM	N/A	OK
CD-R	OK	OK
High Speed CD-RW	OK	OK
Ultra Speed CD-RW	OK	OK
Ultra Speed Plus CD-RW	OK	OK
120 mm (CD)	OK (R/RW)	OK
80 mm (CD)	N/A	N/A
Business Card (CD)	N/A	N/A
Stamped DVD - 5, 9, 10, 18	N/A	OK
DVD-R (Authoring)	NO	OK
DVD-R (SL & DL)	OK	OK
DVD+R (SL & DL)	OK	OK
DVD-RW	OK	OK

Media Type	Write <sup>1</sup>	Read
DVD+RW	OK	OK
DVD-Download	NO	OK
DVD-RAM V2.1	OK	OK
120 mm (DVD)	OK (R/RW/RAM)	OK
80 mm (DVD)	N/A	N/A
Business Card (DVD)	N/A	N/A
Mount Rainier formatted DVD+RW media	NO	OK
BD-ROM (SL & DL)	N/A	N/A
BD-R (SL & DL)	N/A	N/A
BD-RE (SL & DL)	N/A	N/A
120 mm (BD)	N/A	N/A
80 mm (BD)	N/A	N/A
OK = supported NO = not supported N/A for not applicable		

Format	Write <sup>1</sup>	Read
CD-DA	OK	OK
CD-ROM	N/A	OK
CD-ROM XA	N/A	OK
Video CD	OK	OK
CD-I <sup>2</sup>	N/A	OK
Photo CD <sup>2</sup>	OK	OK
CD-Extra	OK	OK
Super Video CD	OK	OK
Super Audio CD Hybrid Disc	N/A	OK
Mount Rainier formatted CD-RW media	NO	OK
DVD-Video	OK	OK
DVD-Audio	N/A	OK
DVD-Data (Single Session)	OK	OK
DVD-Data (Multi Session/border)	OK	OK
Mount Rainier formatted DVD+RW media	NO	OK
BD-MV	N/A	N/A
BD-AV	N/A	N/A

[Back to Contents Page](#)

Format	Write <sup>1</sup>	Read
BD-Data	N/A	N/A
AVCREC	NO	NO
OK = supported NO = not supported N/A for not applicable		

Copy protection / Data security	Write <sup>1</sup>	Read
Support CPRM <sup>3</sup>	OK	OK
Support VCPS <sup>3</sup>	NO	NO
OK = supported NO = not supported N/A for not applicable		

<sup>1</sup> Write requires appropriate application software.

<sup>2</sup> CD-I and PhotoCD may require special reader/player software. PhotoCD writing requires Kodak license.

<sup>3</sup> For CPRM and VCPS support, appropriate application software is required.

## Extended Specifications

System Interface	Data transfer speed	USB 2.0 (480Mbit/s)
Performance		"Max X" speed for each media below. For CD 1X=150 KB/s; DVD 1X=1350 KB/s; BD 1x = 4.5 MB/s
CD (CD-ROM /CD-R/CD-RW)		
	Read	Max. 24X
	Digital Audio Extraction (DAE)	Max. 20X
	Write CD-R	Max. 24X
	Write CD-RW	Max. 16X (US-RW)

<b>DVD</b>		
	Read (Single Layer / Dual or Double Layer)	Max. 8X/8X
	Write DVD+/-R	Max. 8X
	Write DVD+R Double Layer	Max. 6X
	Write DVD-RAM	Max. 5X
	Write DVD+RW	Max. 8X
	Write DVD-RW	Max. 6X
<b>BD</b>		
	Read BD-ROM	N/A
	Write BD-R	N/A
	Write BD-RE	N/A
<b>Power Consumption</b>	Typical	8W
<b>Acoustic noise</b>	Operating (Sound pressure level, typical)	Less Than 50dBA
<b>Power supply</b>	Voltage	DC +5V±5%
<b>Temperature</b>	Operating °C (°F)	5°C~50°C(41°F~122°F)
	Non-operating °C (°F)	-40°C~65°C(-40°F~149°F)
<b>Relative Humidity</b>	Operating (No condensation)	10% to 90% RH
	Non-operating (No condensation, Power Off, without disc)	5% to 95% RH
<b>Altitude</b>	Operating m (ft)	-200 m ~ 3,048 m (-656 ft ~ 10,000 ft)
	MTBF:	150,000 POH (15% duty cycle)
<b>Dimensions and weight</b>		
	Width mm (in)	143mm (5.63in)
	Depth mm (in)	143mm (5.63in)
	Height mm (in)	14.1mm (0.56in)
	Weight g	248g±20g (without USB Cable)

# Regulatory

---

## Regulatory Notices

**Electromagnetic Interference (EMI)** is any signal or emission, radiated in free space or conducted along power or signal leads, that endangers the functioning of radio navigation or other safety service or seriously degrades, obstructs, or repeatedly interrupts a licensed radio communications service. Radio communications services include but are not limited to AM/FM commercial broadcast, television, cellular services, radar, air-traffic control, pager, and Personal Communication Services (PCS). These licensed services, and unlicensed radio services, such as WLAN or Bluetooth, along with unintentional radiators such as digital devices, including computer systems, contribute to the electromagnetic environment.

**Electromagnetic Compatibility (EMC)** is the ability of items of electronic equipment to function properly together in the electronic environment. While this computer system has been designed and determined to be compliant with regulatory agency limits for EMI, there is no guarantee that interference will not occur in a particular installation.

Dell™ products are designed, tested, and classified for their intended electromagnetic environment. These electromagnetic environment classifications generally refer to the following harmonized definitions:

- **Class B** products are intended for use in residential/domestic environments but may also be used in non-residential/non-domestic environments.

Note: The residential/domestic environment is an environment where the use of broadcast radio and television receivers may be expected within a distance of 10 m from where this product is used.

- **Class A** products are intended for use in non-residential/non-domestic environments. Class A products may also be utilized in residential/domestic environments but may cause interference and require the user to take adequate corrective measures.

If this equipment does cause interference with radio communications services, which can be determined by turning the equipment off and on, you are encouraged to try to correct the interference by one or more of the following measures:



[Back to Contents Page](#)

- Reorient the receiving antenna.
- Relocate the computer with respect to the receiver.
- Move the computer away from the receiver.
- Plug the computer into a different outlet so that the computer and the receiver are on different branch circuits.

If necessary, consult a Dell™ Technical Support representative or an experienced radio/television or EMC technician for additional suggestions.

Information Technology Equipment (ITE), including peripherals, expansion cards, printers, input/output (I/O) devices, monitors, and so on, that are integrated into or connected to the system should match the electromagnetic environment classification of the computer system.

**A Notice about Shielded Signal Cables:** Use only shielded cables for connecting peripherals to any Dell™ device to reduce the possibility of interference with radio communications services. Using shielded cables ensures that you maintain the appropriate EMC classification for the intended environment. For parallel printers, a cable is available from Dell™. If you prefer, you can order a cable from Dell™ on the World Wide Web at [www.dell.com](http://www.dell.com).

Dell has determined that this product is a Class B harmonized product. The following sections provide country-specific EMC/EMI or product safety information.

## FCC Notices (U.S. Only)



This equipment generates, uses, and can radiate radio frequency energy and, if not installed and used in accordance with the manufacturer's instruction manual, may cause interference with radio and television reception. This equipment has been tested and found to comply with the limits for a Class B digital device pursuant to Part 15 of the FCC Rules.

**Notice:** The FCC regulations provide that changes or modifications not expressly approved by Dell™ Inc. could void your authority to operate this equipment.

[Back to Contents Page](#)

These limits are designed to provide reasonable protection against harmful interference in a residential installation. However, there is no guarantee that interference will not occur in a particular installation. If this equipment does cause harmful interference with radio or television reception, which can be determined by turning the equipment off and on, you are encouraged to try to correct the interference by one or more of the following measures:

- Reorient or relocate the antenna of the radio/television receiver.
- Increase the separation between this equipment and the radio/television receiver.
- Plug the equipment into a different outlet so that the equipment and the radio/television receiver are on different power mains branch circuits.
- Consult a representative of Dell™ or an experienced radio/television technician for additional suggestions.

The following information is provided on the device or devices covered in this document in compliance with FCC regulations:

- Product name: *DW514 External DVD±RW Slot Drive*
- Company name: *Dell Inc. Worldwide Regulatory Compliance, Engineering and Environmental Affairs, One Dell Way PS4-30, Round Rock, Texas 78682, USA*  
*TEL: +1-512-338-4400*

## Industry Canada (Canada Only)

### Industry Canada, Class B

This Class B digital apparatus complies with Canadian ICES-003.

**Notice:** The Industry Canada regulations provide that changes or modifications not expressly approved by Dell™ Inc. could void your authority to operate this equipment.

### Industry Canada, classe B

Cet appareil numérique de la classe B est conforme à la norme NMB-003 du Canada.

**Avis :** Dans le cadre des réglementations d'Industry Canada, vos droits d'utilisation de cet équipement peuvent être annulés si des changements ou modifications non expressément approuvés par Dell Inc. y sont apportés.

[Back to Contents Page](#)

## CE Notice (European Union)

This product has been determined to be in compliance with 2006/95/EC (Low Voltage Directive), 2004/108/EC (EMC Directive), and amendments of the European Union. Versions of this product may have integrated modules or add-in cards supporting wireless and telecommunications operations. These wireless and telecommunications peripherals have been assessed as compliant in this product and, when present, are in compliance with 1999/5/EC (R&TTE Directive, for Radio and Telecommunications Interfaces).

### European Union, Class B

This *Dell Inc.* device is classified for use in a typical Class B domestic environment.

A "Declaration of Conformity" in accordance with the preceding directives and standards has been made and is on file at *Dell Inc. Worldwide Regulatory Compliance, Engineering and Environmental Affairs, One Dell Way PS4-30, Round Rock, Texas 78682, USA TEL: +1-512-338-4400.*

## KCC Notice (Republic of Korea Only)

**KCC, B등 급 장비**

(가정용 정보/원격 통신 장비)

### **B급 기기 (가정용 방송통신기기)**

**이 기기는 가정용(B급)으로 전자파적합등록을 한 기기로서 주로 가정에서 사용하는 것을 목적으로 하며, 모든 지역에서 사용할 수 있습니다.**

다음은 KCC 규정 준수에 따라 본 설명서에서 언급하고 있는 B등급 장치에 관한 것입니다.

- 인증 수취인: Techman Electronics (Changshu) Co., Ltd.  
No.66 Dalian Road, High-tech Industrial Park,  
Changshu Economic Development Zone,  
Jiangsu, China  
+86-(0)512-52360168
- 장비 또는 모델명: 이 정보에 관한 제품 레이블을 참조하십시오.
- 인증 번호: KCC 로고 바로 밑에 있는 인증 번호를  
참조하십시오.
- 제조일: 각의 제품에는 제조 날짜가 인쇄되어  
있습니다. 이 날짜는 바코드 형태로 되어 있을 것입니다.
- 제조국가: 이 정보에 관한 제품 레이블을 참조하십시오.

상기 각각의 제품에는 제조 날짜가 인쇄되어 있습니다.

## VCCI (Japan Only)

VCCI、クラス B



この装置は、クラスB情報技術装置です。この装置は、家庭環境で使用することを目的としていますが、この装置がラジオやテレビジョン受信機に近接して使用されると、受信障害を引き起こすことがあります。

取扱説明書に従って正しい取り扱いをして下さい。

VCCI-B

## [Waste Electrical and Electronic Equipment \(WEEE\) Directive](#)



In the European Union, this label indicates that this product should not be disposed of with household waste. It should be deposited at an appropriate facility to enable recovery and recycling.



For information on how to recycle this product responsibly in your country, please visit: [www.euro.dell.com/recycling](http://www.euro.dell.com/recycling).


## [REACH \(Registration, Evaluation, Authorization of Chemicals\)](#)

REACH (Registration, Evaluation, Authorization of Chemicals) is the European Union (EU) chemical substances regulatory framework. Information on substances of very high concern contained in Dell products in a concentration above 0.1 % weight by weight (w/w) can be found at [www.dell.com/REACH](http://www.dell.com/REACH).

[Back to Contents Page](#)

## Turkey RoHS

### Waste Electrical and Electronic Equipment (WEEE) Yönergeleri

	<p>Avrupa Birliđi'nde bu etiket, ürünün ev elektroniđi aletleri atıkları ile imha edilemeyeceđini gösterir. Kurtarmak ve geri dönüşümünü sağlamak için uygun şartlarda saklanması gerekir. Bu ürünün geri dönüşümünün nasıl sağlanacağı konusunda bilgi için lütfen şu adresi ziyaret edin: <a href="http://www.euro.dell.com/recycling">www.euro.dell.com/recycling</a>. EEE Yönetmeliđine Uygundur Ve Elektronik Eşyalarda Bazı Zararlı Maddelerin Kullaniminin Sınırlanmasına Dair Yönetmelik.</p>
---	---

## WW Recycling Information


Dell™ recommends that customers dispose of their used computer hardware, monitors, printers, and other peripherals in an environmentally sound manner. Potential methods include reuse of parts or whole products and recycling of products, components, and/or materials.


For specific information on Dell's recycling programs worldwide, please visit:

[www.dell.com/recyclingworldwide](http://www.dell.com/recyclingworldwide).

## Laser Safety Statement

This product has been tested to and is found to be in compliance with the IEC60825-1 safety standard for laser products.

 **WARNING:** Class 1 Laser Product

 **CAUTION:** Do not remove metal cover: up to Class 3B laser radiation when opened. Avoid exposure to beam.

## FDA Notice

This product complies with DHHS Rules 21CFR Chapter 1, Subchapter J.

## RoHS (China Only)

### 中国大陆 RoHS

根据中国大陆《电子信息产品污染控制管理办法》（也称为中国大陆 RoHS），以下部分列出了产品中可能包含的有毒和/或有害物质的名称和含量。

#### EIP（RMSD，介质，电源设备及所有其他电子信息产品）

部件名称	有毒或有害物质及元素					
	铅 (Pb)	汞 (Hg)	镉 (Cd)	六价铬 Cr VI)	多溴联苯 (PBB)	多溴联苯醚 (PBDE)
EIP	X	○	X	○	○	○
介质/软件	○	○	○	○	○	○

\*印刷电路部件包括所有印刷电路板（PCB）及其各自的离散组件、IC 及连接器。

“○”表明该部件所含有毒和有害物质含量低于 MCV 标准（SJ/T11363-2006）定义的阈值。

“X”表明该部件所含有毒和有害物质含量高于 MCV 标准（SJ/T11363-2006）定义的阈值。所有显示 X 的情况，是按照欧盟 RoHS 采用了容许的豁免指标。

在中国大陆销售的相应电子信息产品（EIP）都必须遵照中国大陆《电子信息产品污染控制标识要求》标准（SJ/T11364-2006）贴上环保使用期限（EPUP）标签。该产品所采用的 EPUP 标签是基于中国大陆的《电子信息产品环保使用期限通则》标准。

